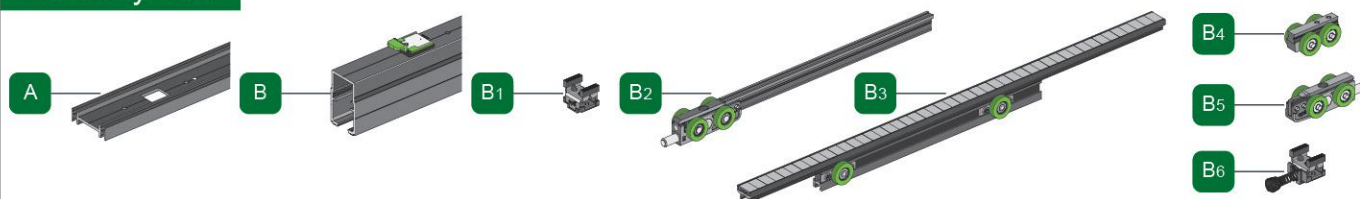
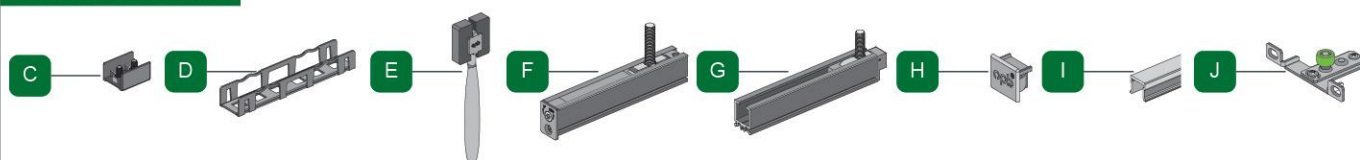


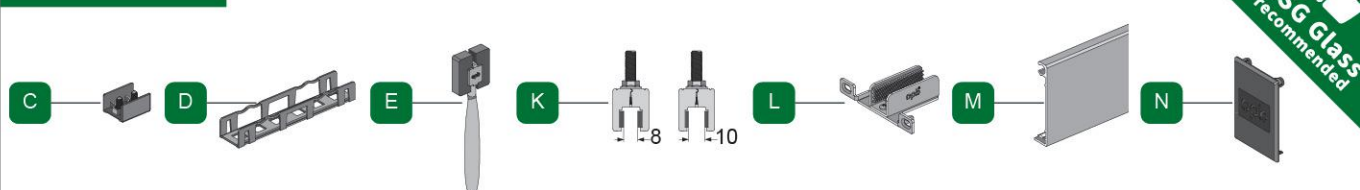
## Track System



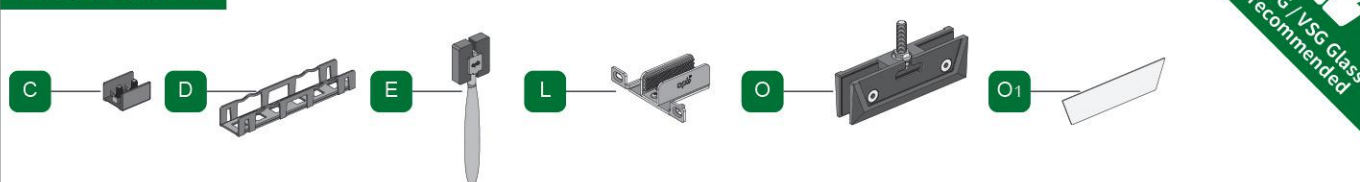
## Wooden Door



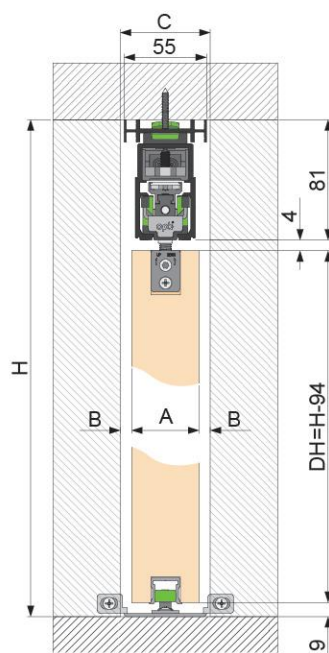
## Glass Door A



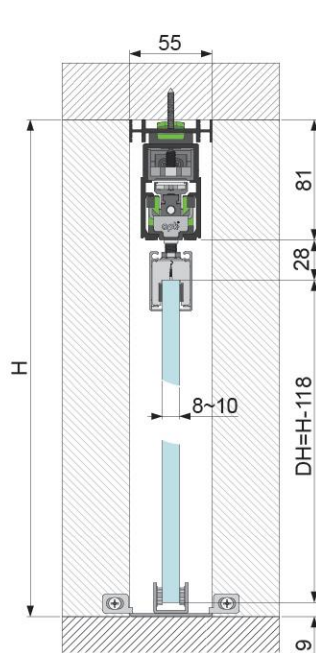
## Glass Door B



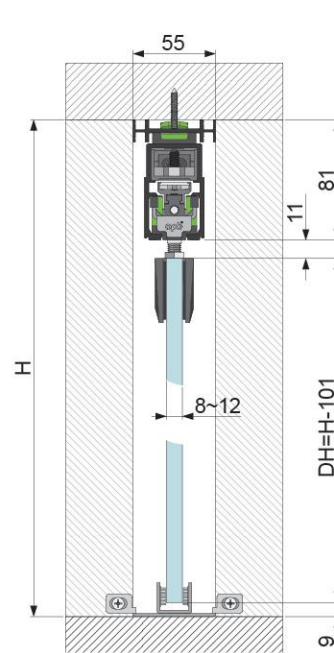
Wooden Door



Glass door A

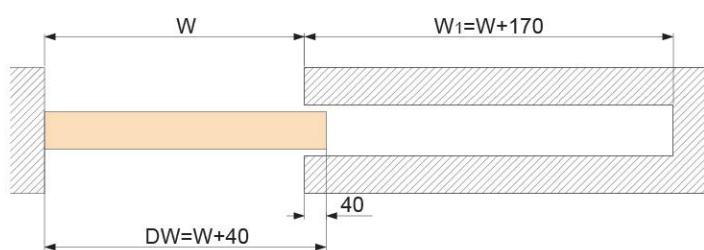


Glass door B



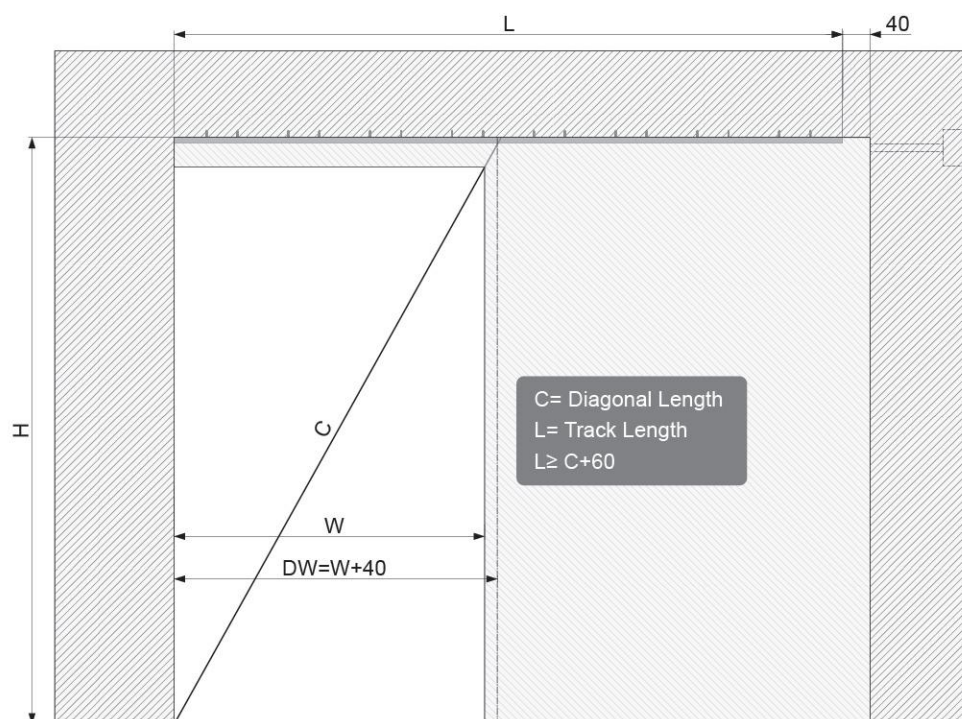
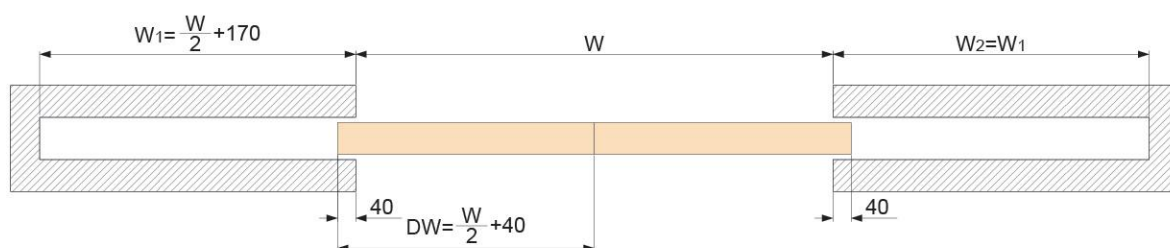
A	B	C
35mm	10mm	55mm
40mm	7.5mm	55mm
45mm	7.5mm	60mm

## Single system / Schiene



Schienenlänge L Track length L	Lichtes Einbaumaß Door opening size W	Türbreite Door width DW
2100mm	680~980mm	720~1020mm
2800mm	980~1330mm	1020~1370mm

## Double systems / Schienen (synchro system)



The diagonal size of door opening  $\geq$  Track length

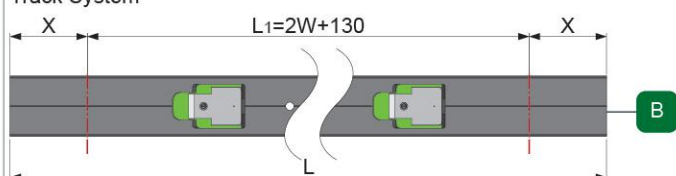
# 1 Single system / Schiene

Schienenlänge L Track length L	Lichtes Einbaumaß Door opening size W
2100mm	680~980mm
2800mm	980~1330mm

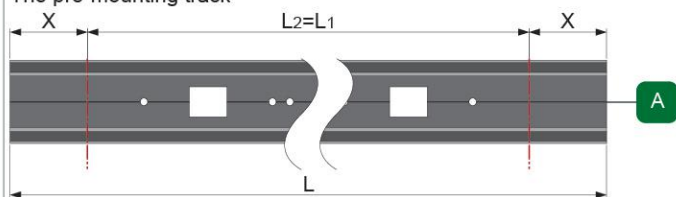
$X=(L-2W-130)/2$   
 Note:  
 W: door opening width  
 L: the track length delivered  
 X: the length of cutting at both sides  
 L1: Track length after cutting

**!** When the track system and the pre-mounting track is too long, then both sides need to be cut by the same length

Track System



The pre-mounting track



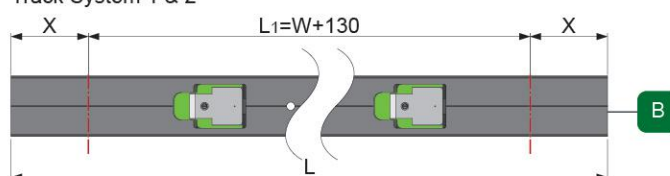
# Double systems / Schienen (synchro system)

Schienenlänge L Track length L	Lichtes Einbaumaß Door opening size W
(2100x2)mm	1360~1960mm
(2800x2)mm	1960~2660mm

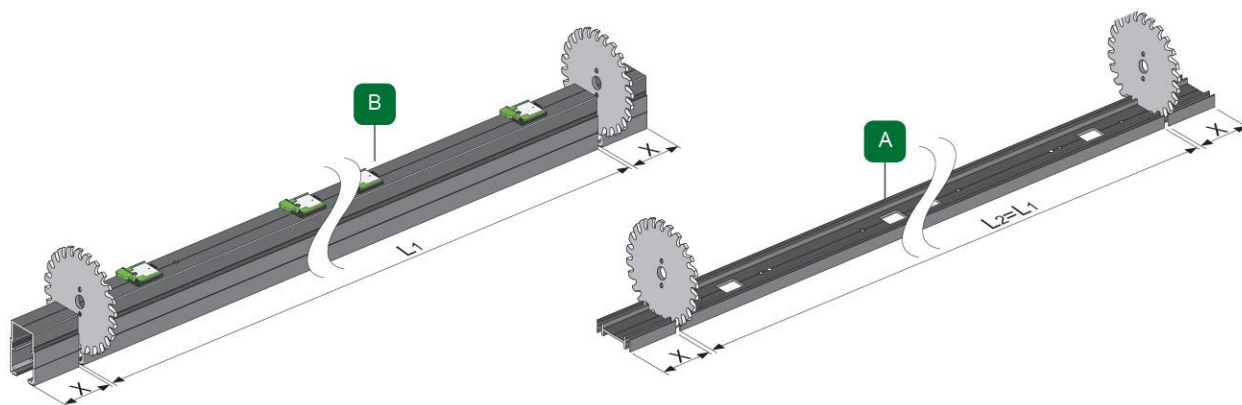
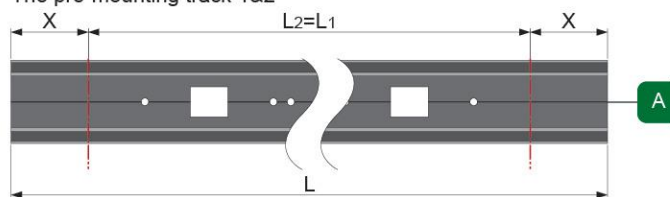
$X=(L-W-130)/2$   
 Note:  
 W: door opening width  
 L: the track length delivered  
 X: the length of cutting at both sides  
 L1: Track length after cutting

**!** When the track system 1&2 and the pre-mounting track is too long, then both sides need to be cut by the same length

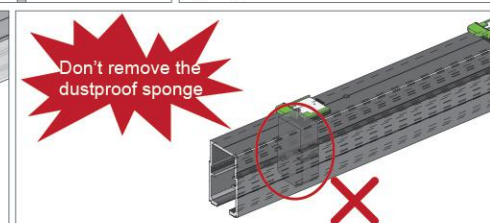
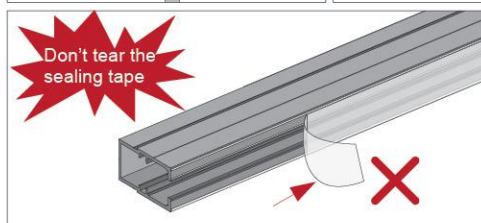
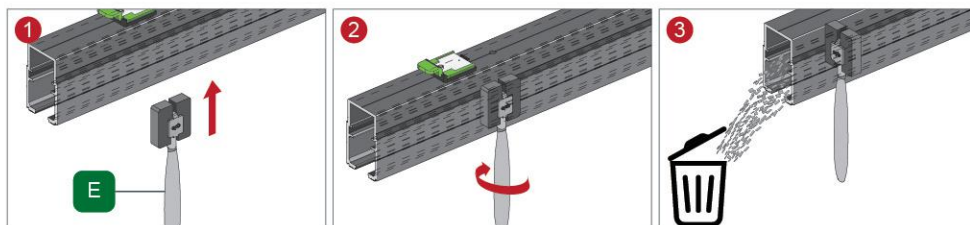
Track System 1 & 2



The pre-mounting track 1&2

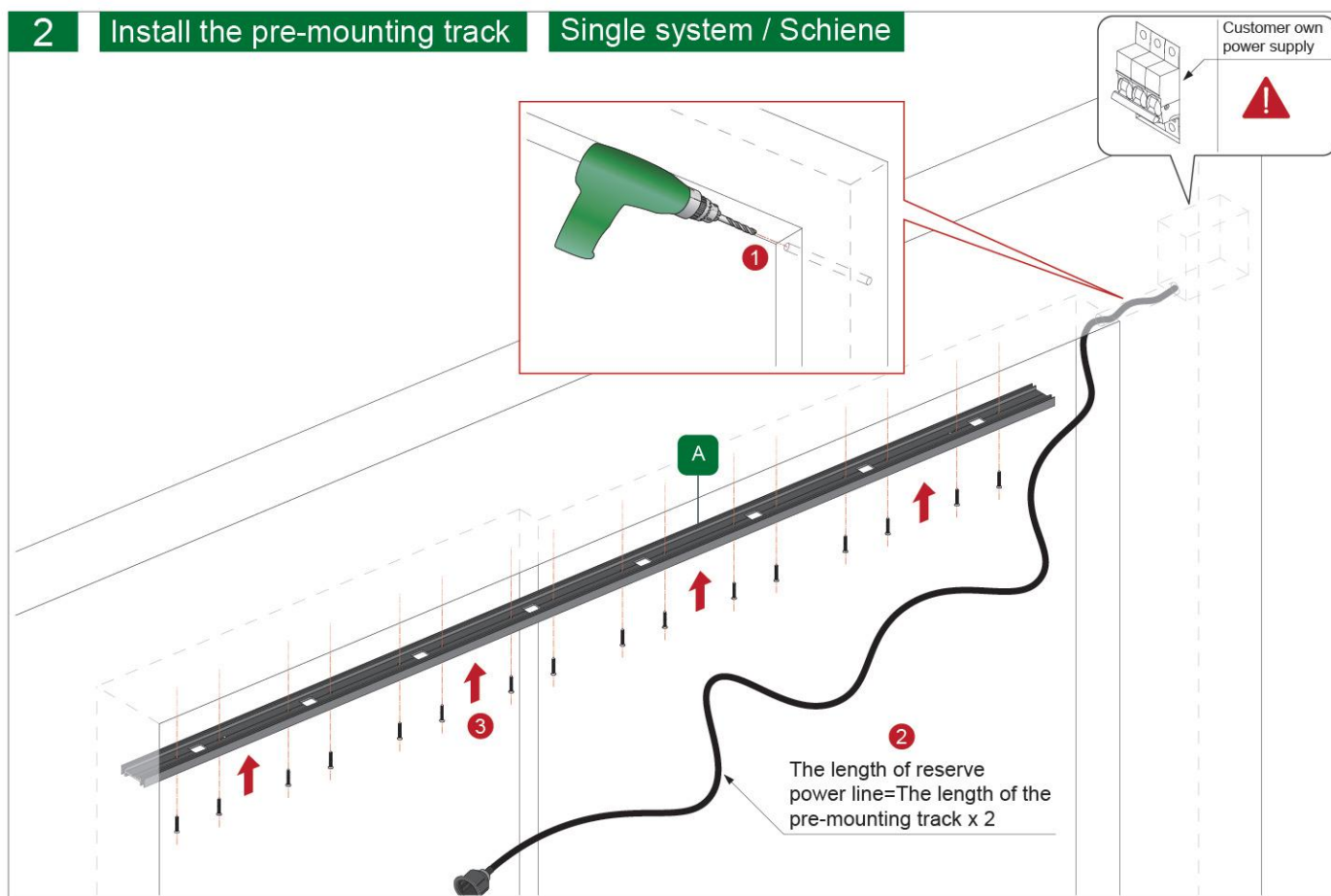


Please use the cleaning brush to clean the aluminum scraps generated after cutting the track, to keep the inside of the track clean



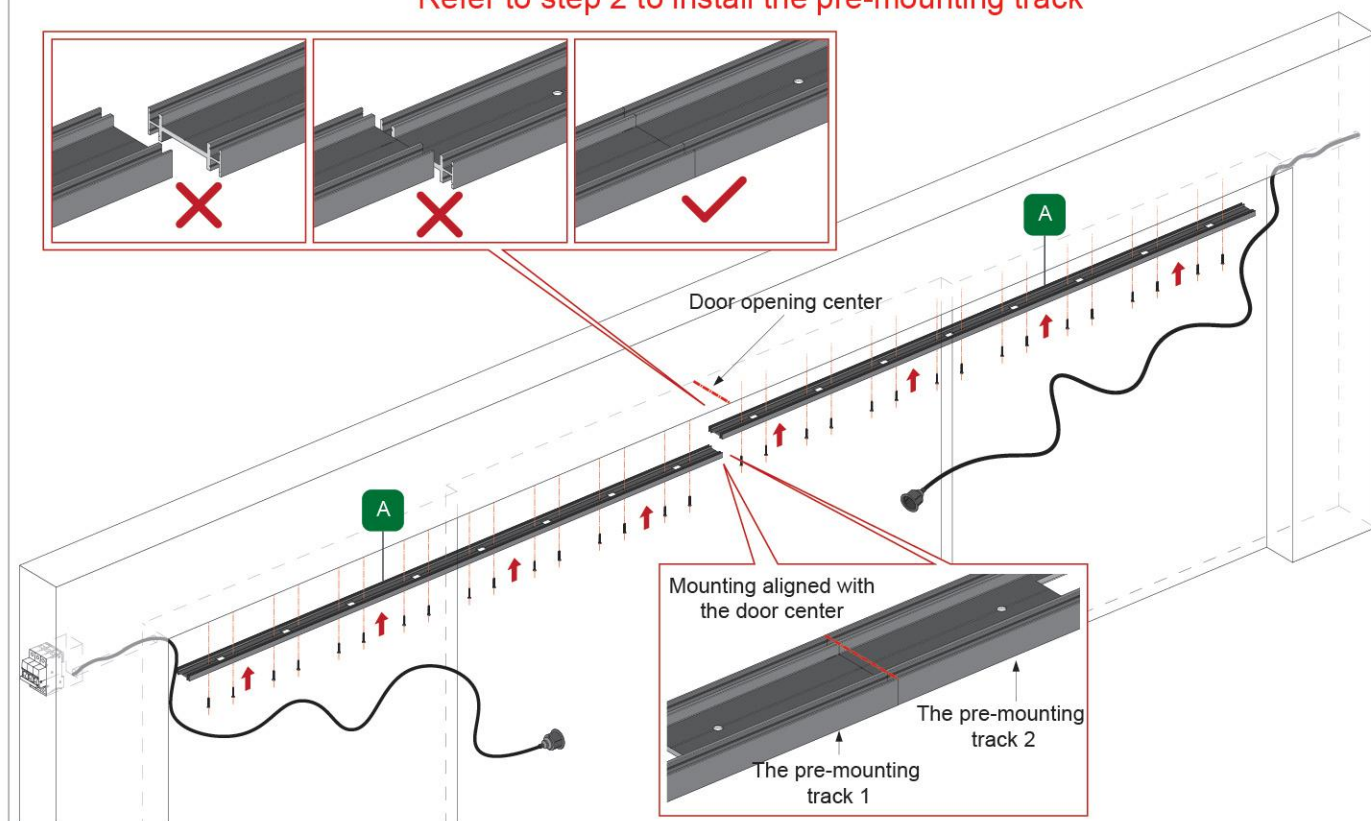


## 2 Install the pre-mounting track Single system / Schiene



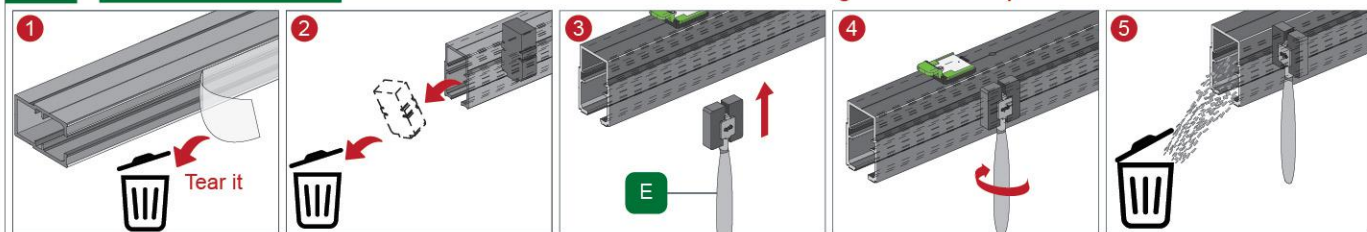
## Double systems / Schienen (synchro system)

Refer to step 2 to install the pre-mounting track



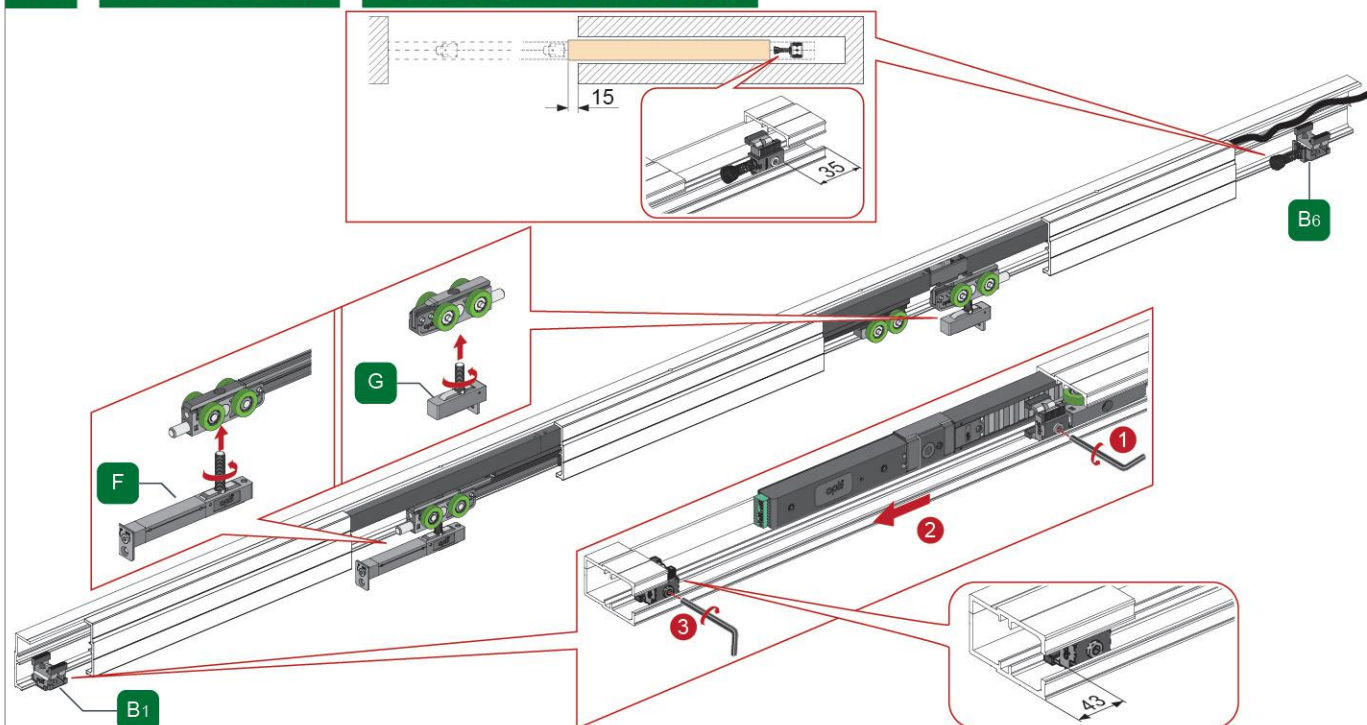
### 3 Clean the track

Please clean the track with a cleaning brush to keep the inside of the track clean



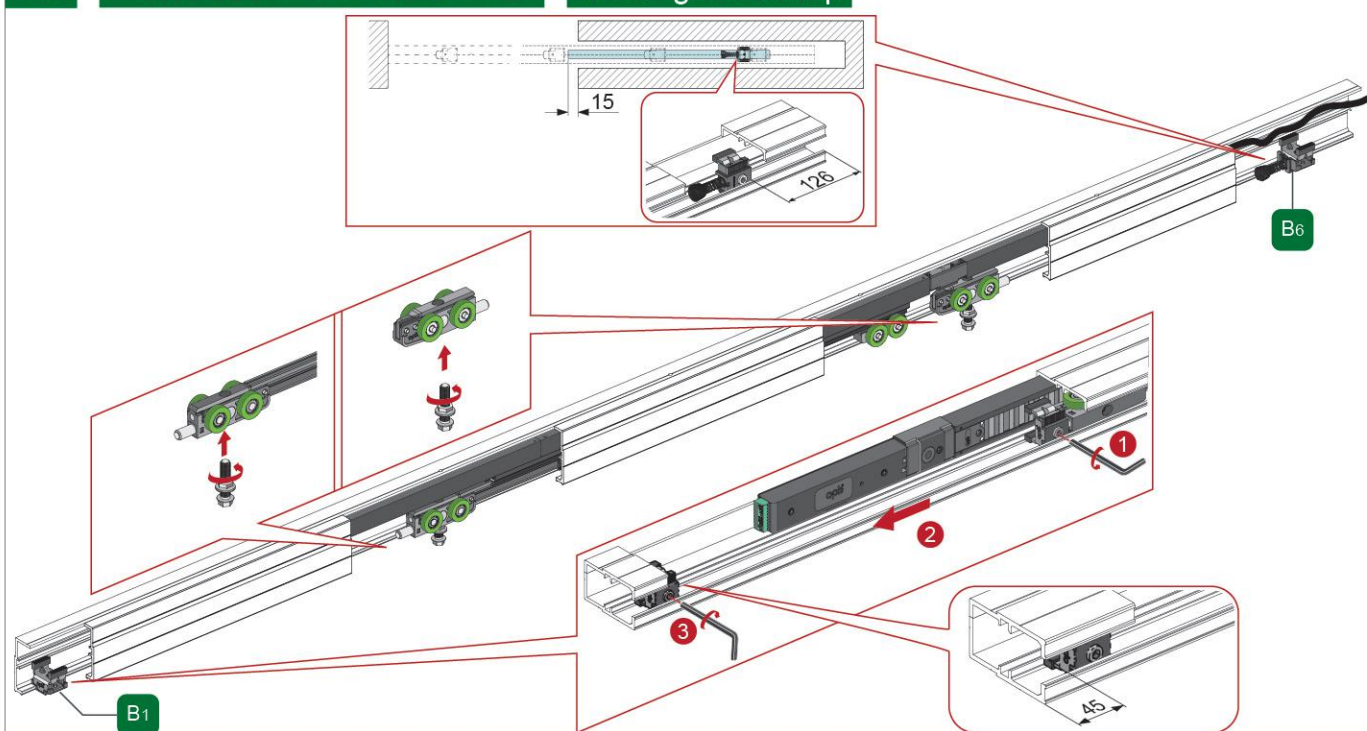
### 4-A Wooden Door

#### Install the minimal bracket



### 4-B Glass door A & Glass door B

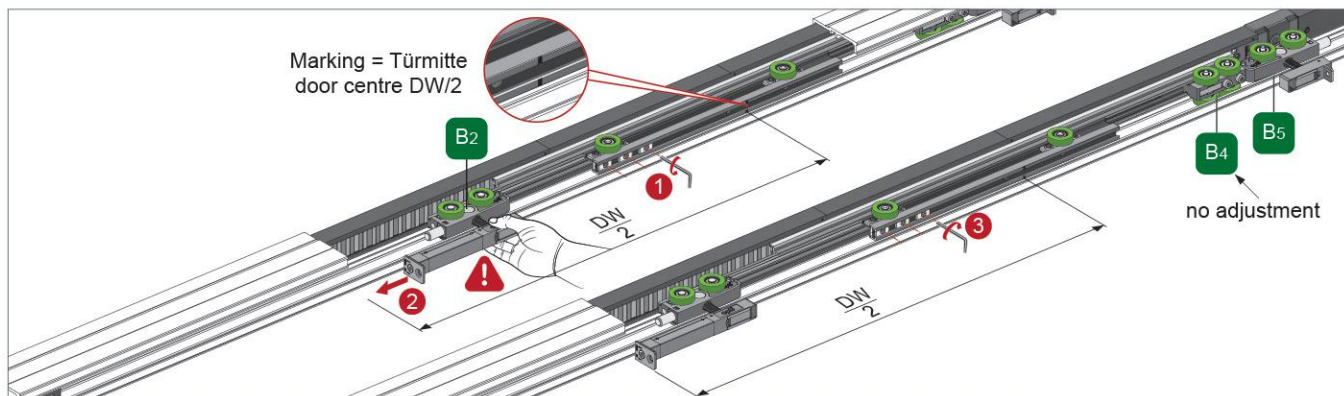
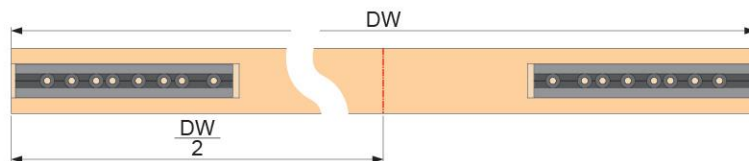
#### Install glass clamp





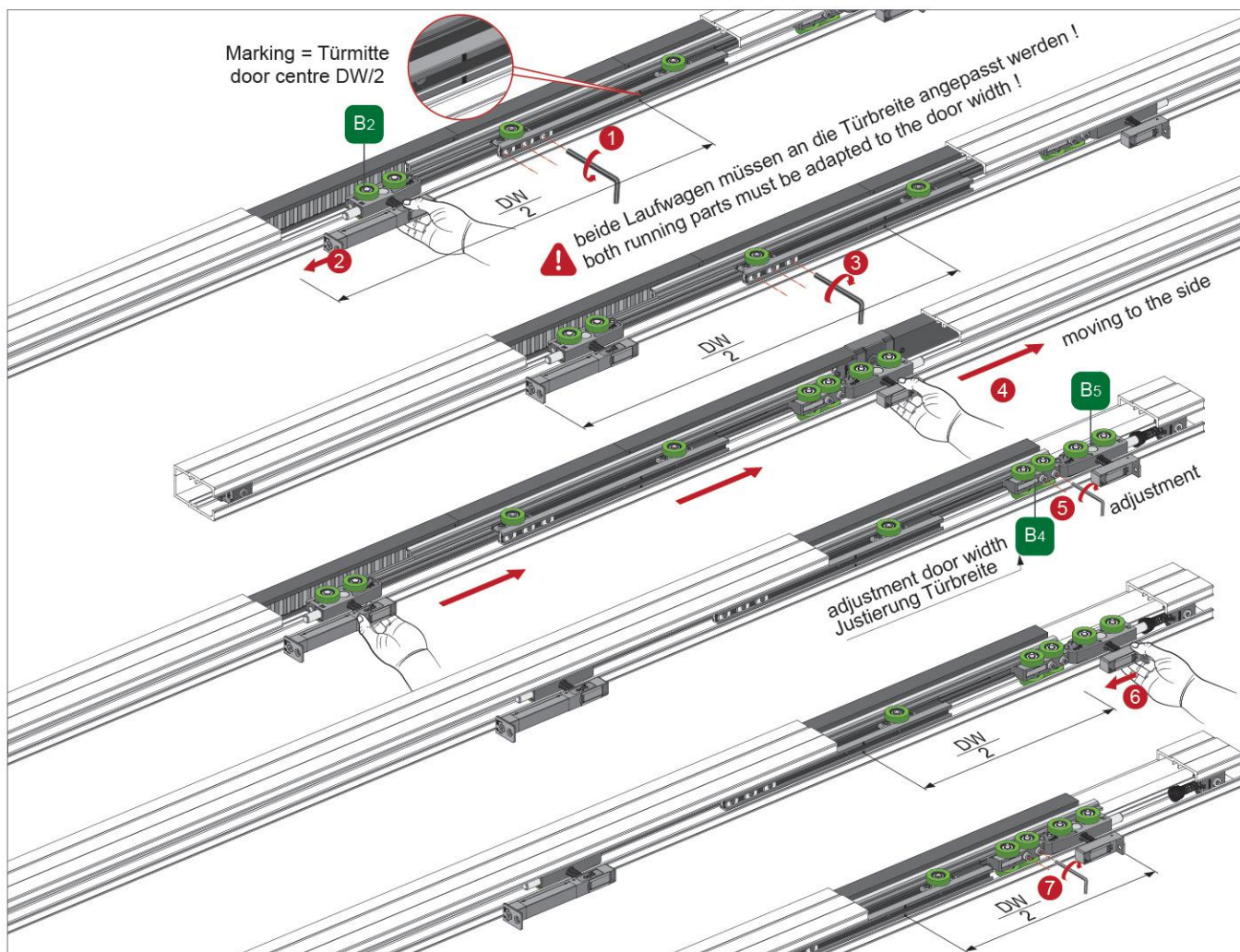
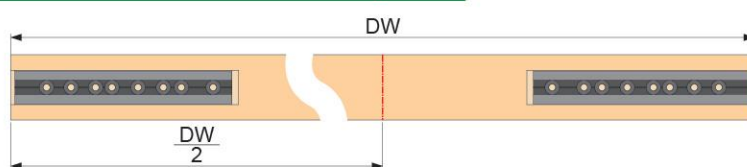
## 5-A Einstellung für eine breitere Tür / Adjustment for a wider door panel

Schienenlänge L Track length L	Lichtes Einbaumaß Door opening size W	Türbreite Door width DW
2100mm	680~980mm	865~1020mm
2800mm	980~1330mm	1215~1370mm



## Einstellung für eine schmalere Tür / Adjustment for a narrower door panel

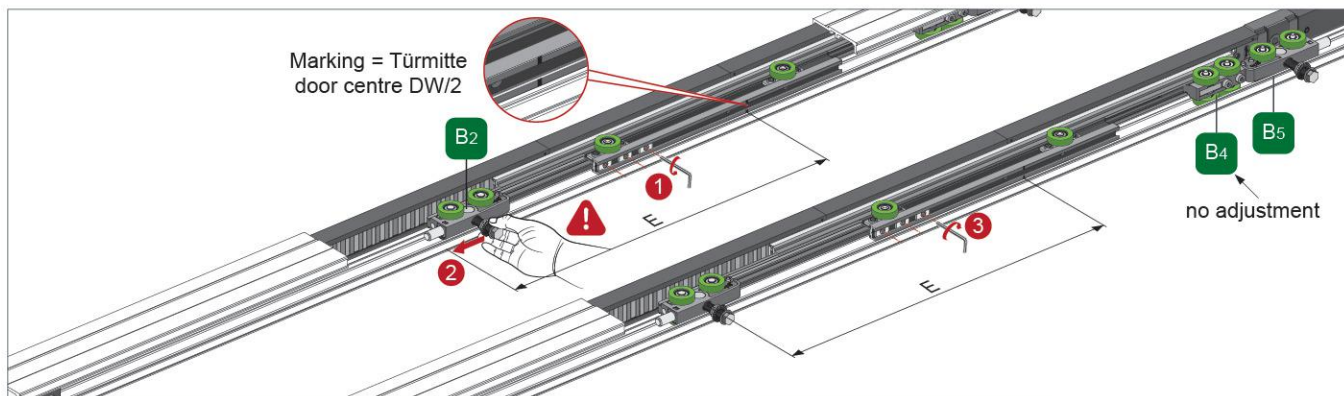
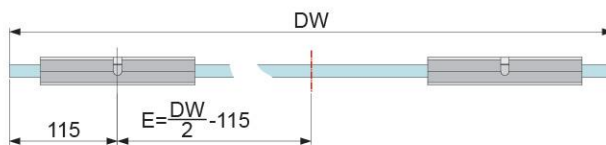
Schienenlänge L Track length L	Lichtes Einbaumaß Door opening size W	Türbreite Door width DW
2100mm	680~980mm	720~865mm
2800mm	980~1330mm	1020~1215mm





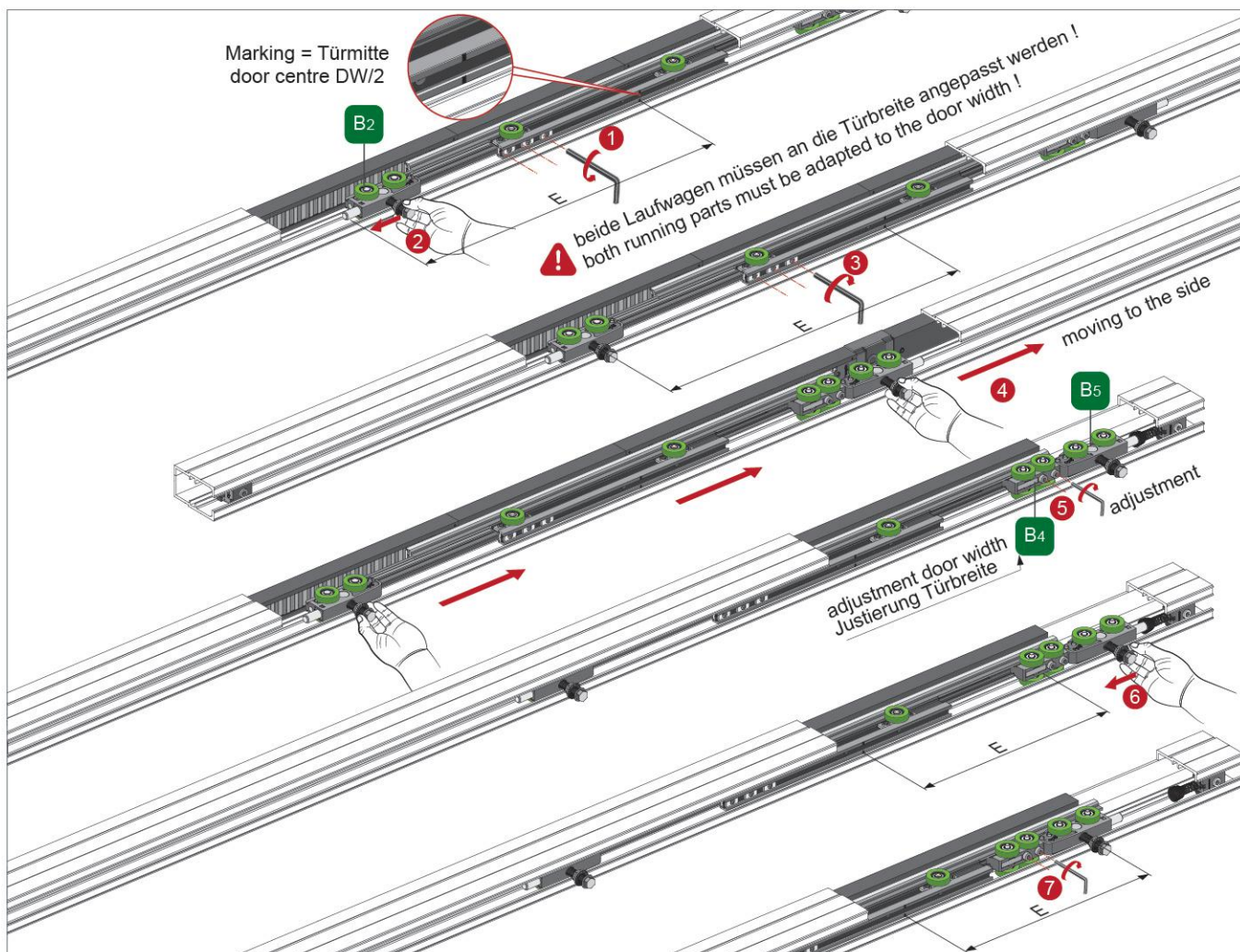
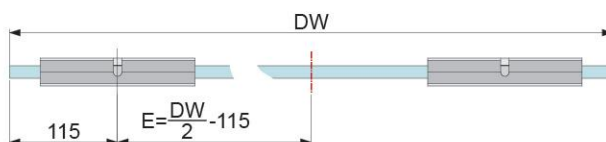
## 5-B Einstellung für eine breitere Tür / Adjustment for a wider door panel

Schienenlänge L Track length L	Lichtes Einbaumaß Door opening size W	Türbreite Door width DW
2100mm	680~980mm	865~1020mm
2800mm	980~1330mm	1215~1370mm



## Einstellung für eine schmalere Tür / Adjustment for a narrower door panel

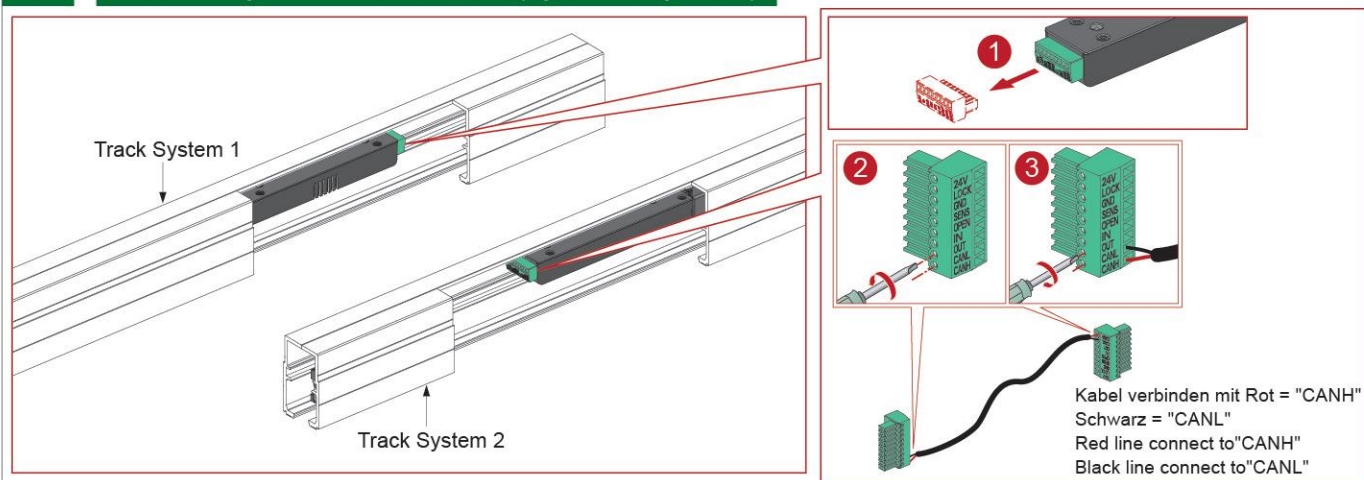
Schienenlänge L Track length L	Lichtes Einbaumaß Door opening size W	Türbreite Door width DW
2100mm	680~980mm	720~865mm
2800mm	980~1330mm	1020~1215mm





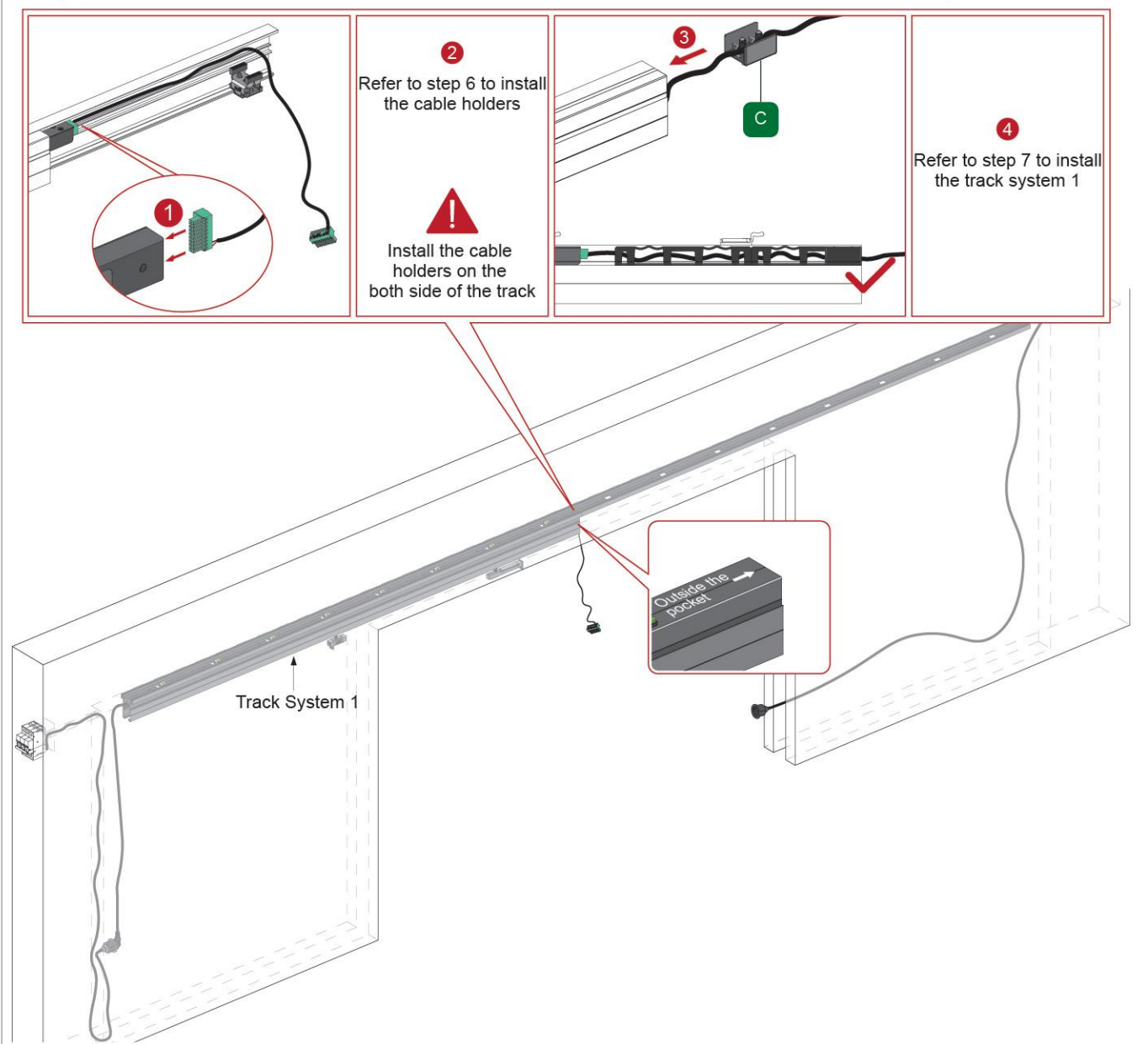


## 8 Double systems / Schienen (synchro system)



## 9 Double systems / Schienen (synchro system)

### Install track system 1

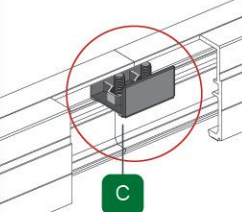


1 Refer to step 6 to install the cable holders

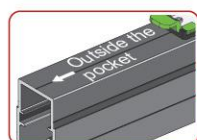
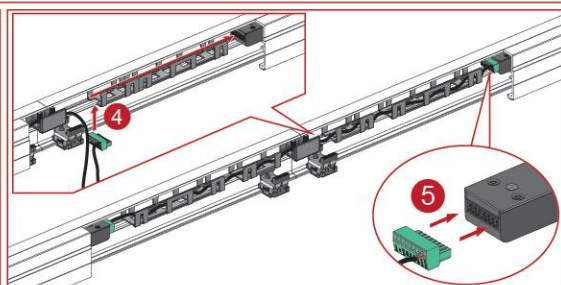


Install the cable holders on the both side of the track

2 Put one connector to both tracks and fix it

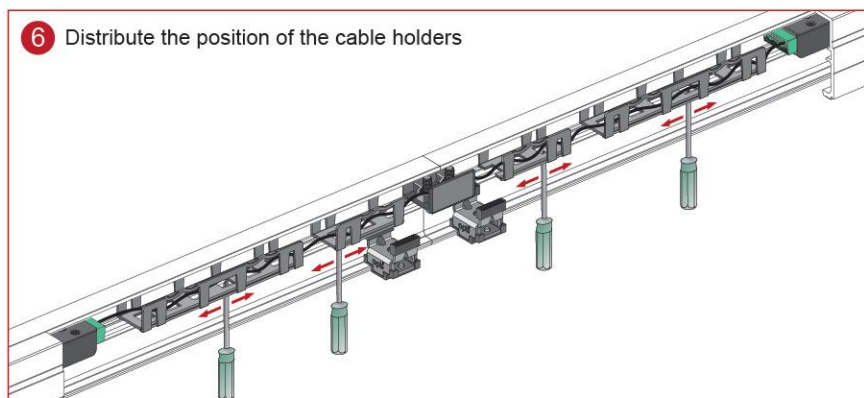


3 Refer to step 7 to install the track system 2



Track System 2

6 Distribute the position of the cable holders

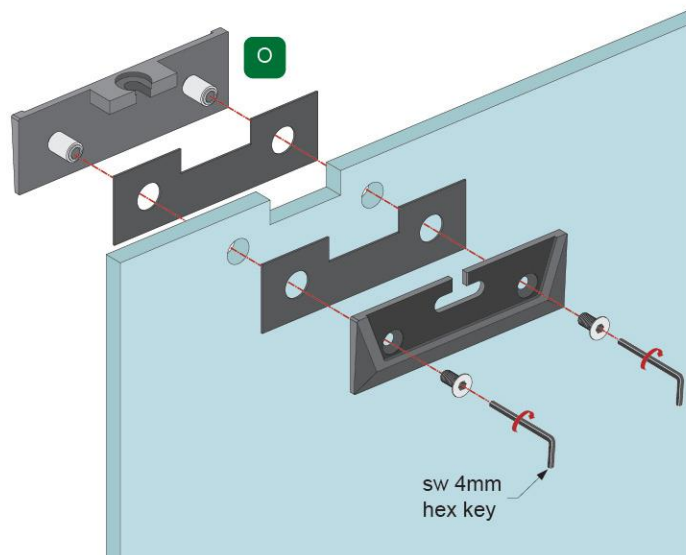
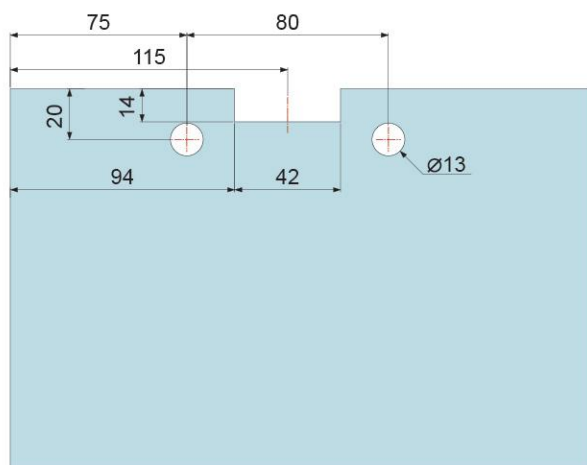






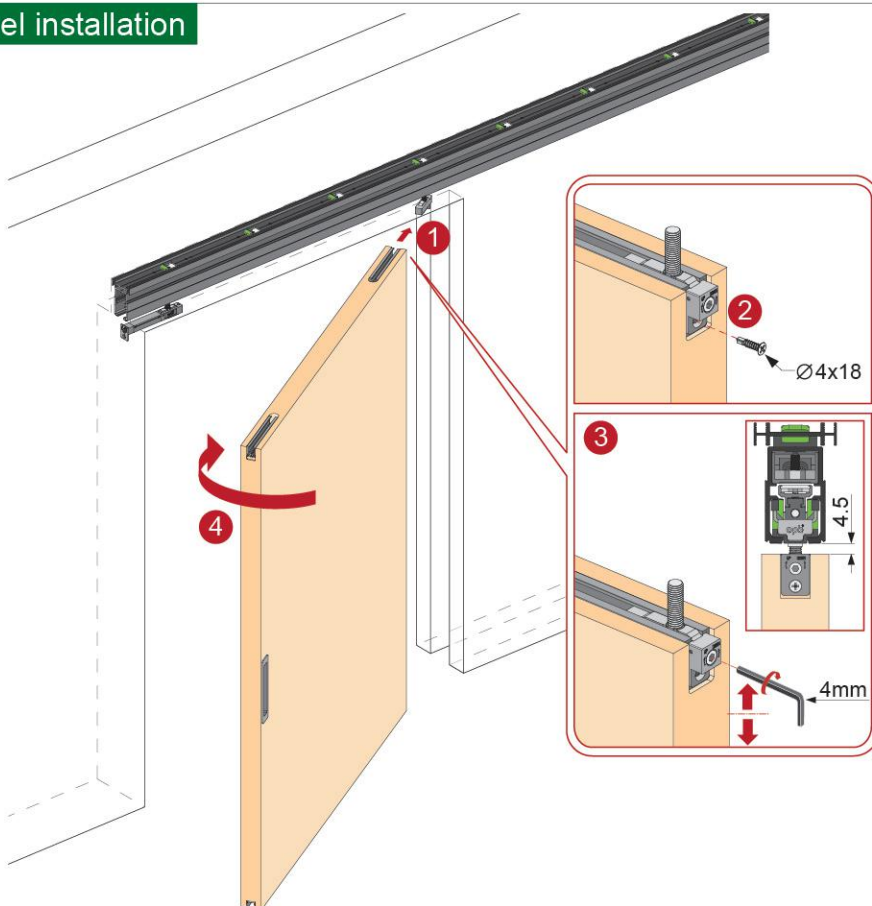
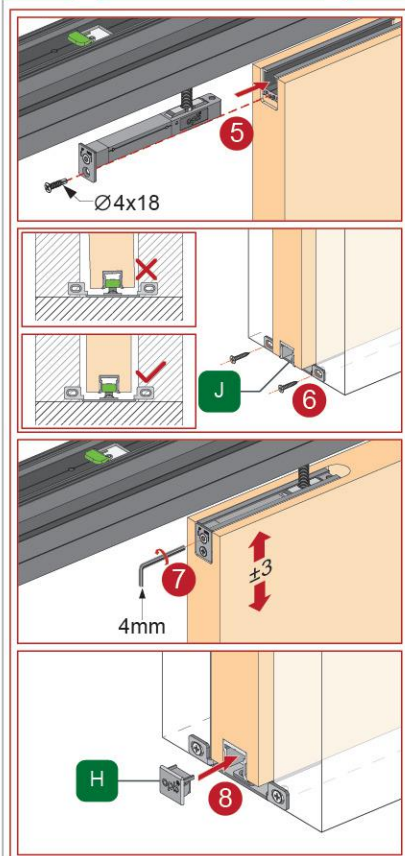
## 11-C Glass door B

Glass door hole size



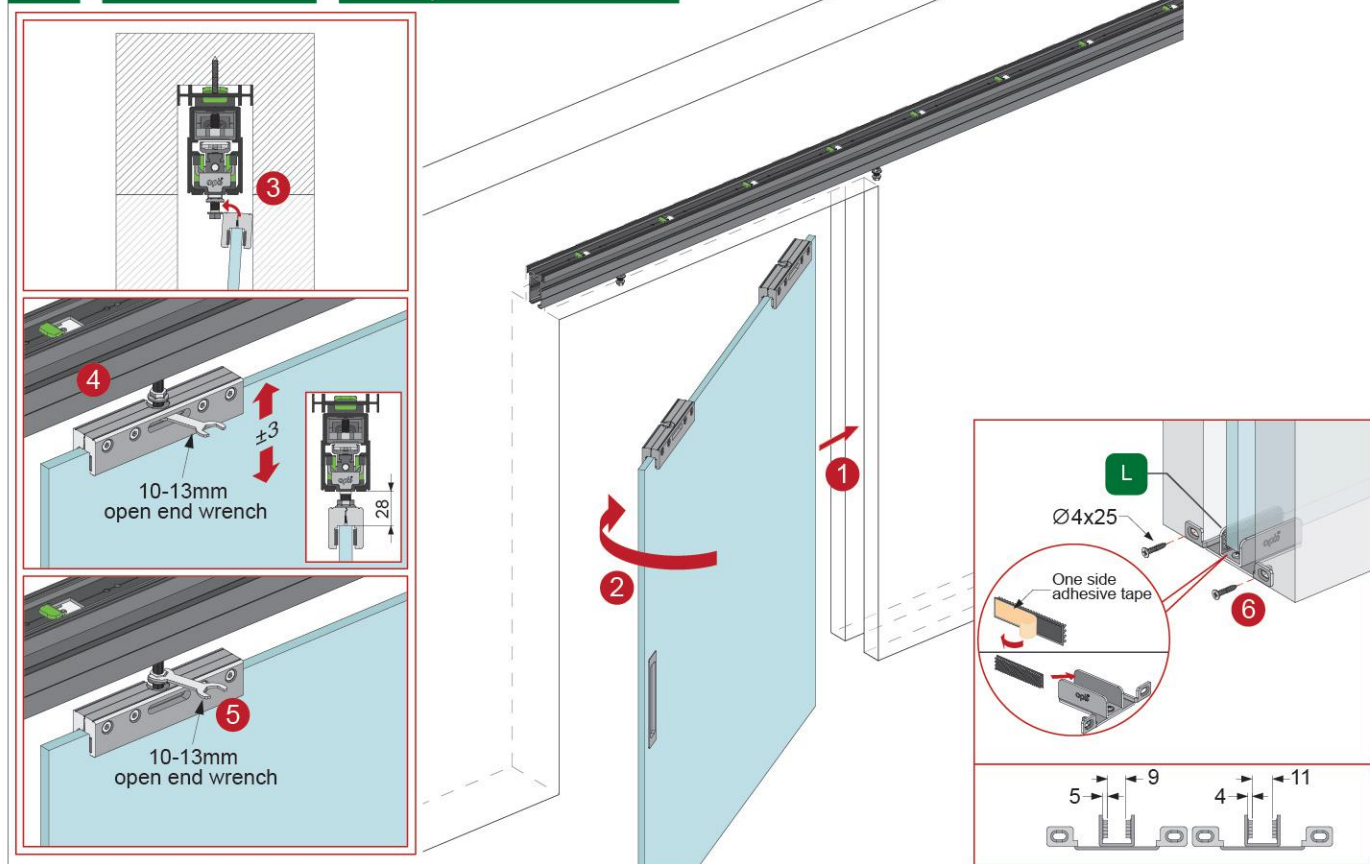
8mm glass with 4 pieces of plastic sheet  
10mm~12mm glass with 2 pieces of plastic sheet

## 12-A Wood door Door panel installation

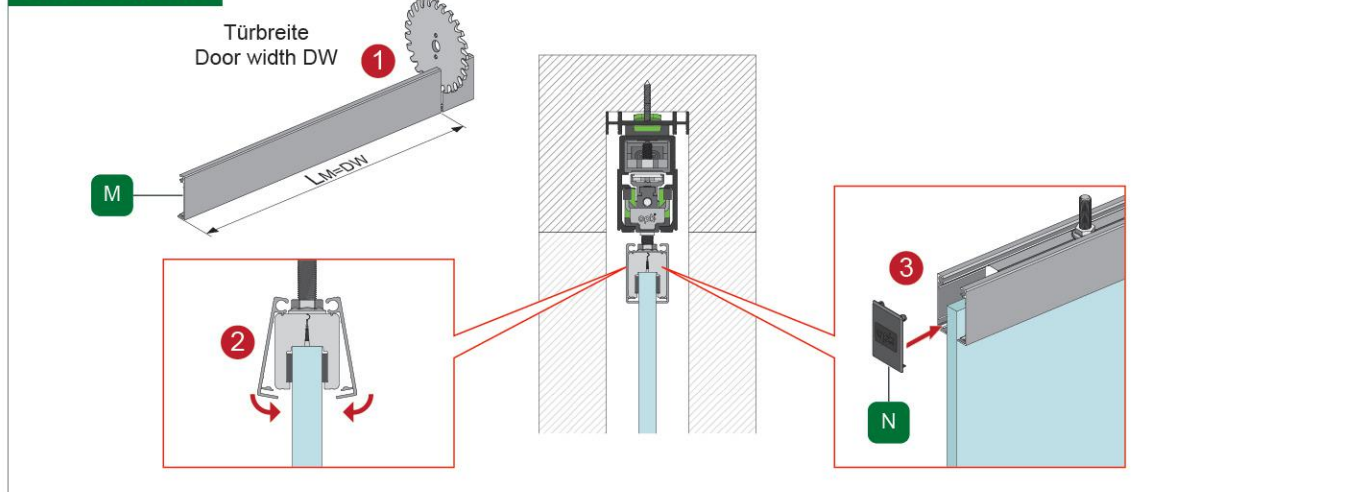




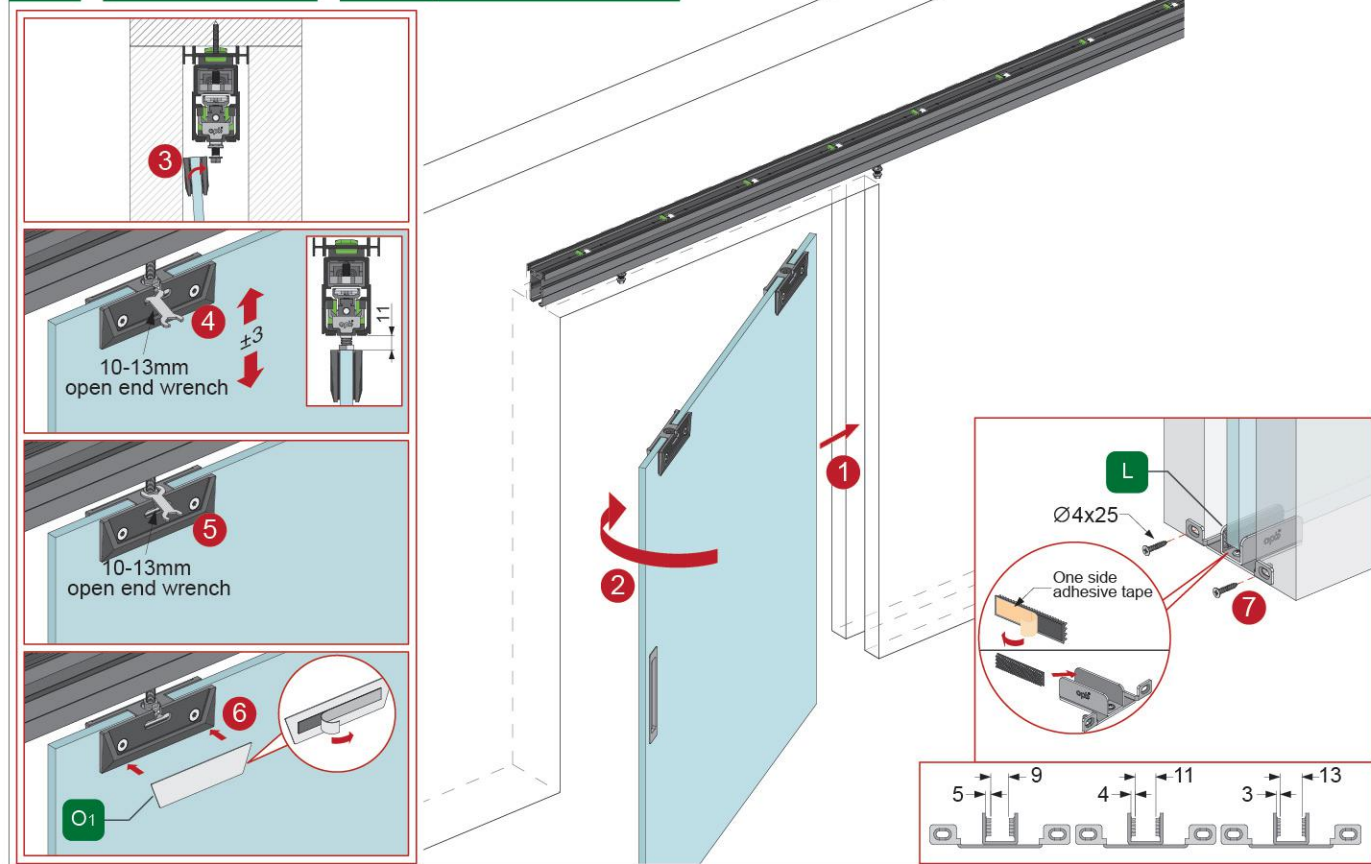
## 12-B Glass door A Door panel installation



## Glass door A



## 12-C Glass door B Door panel installation





# The packing list

The serial number	The name		unit	Quantity							location
				1	2	3	4	5	6	7	
1	Rail system		Pc								B
2	Common parts		Set								C
	Linkage accessories										
3	The bottom rail		Pc								A
4	Accessories package		Pc								B
5	Instructions		Pc								A
6	Warranty card		Pc								C
7	Communication line		Pc								C
8	Decorative cover		Pc								B
9	Pre-Mounting track		Pc								A
10	The remote control		Pc								C
11	Sensor		Pc								C
12	Smart Sensor		Pc								C
13	Wireless switch		Set								C
14	Wired touch switch		Pc								C
15	Sensor Switch		Pc								C
16	Wired access control system		Set								D
17	Wireless access control system		Set								D
18											

Position code: A- in wooden case, B- in carton, C- in accessory box, D- individually packed  
All quantity and location codes are invalid if altered